



Sound impact insulation for comfort living and home-life

Hofafloor

Airborne and impact sound insulation from wood fibre boards

These boards are specially developed for sound impact insulation and are characterized with excellent insulation properties. The main application area is for constructions of floors. The boards are produced without any kind of glues with possibility to use under high floor loadings. Therefore are the boards applicable like underlayer for heavy screedings, bearing boards (e.g. Fermacell) or wood-based panels. The Hofafloor boards is possible to apply as excellent sound impact insulation under some of parquetry.

The Hofafloor boards is possible to use in new buildings and also by redevelopment of massive concrete and wooden timber ceilings.

Especially by application of guss asphalt is the usage of Hofafloor boards like sound impact insulation very effective.

For safety reasons it is necessary by application under floor heating to prevent the possibility of damping the boards by accidents in tube system.

The range of application is very large by massive constructions of ceilings (concrete, ceramic, porous concrete, etc.) And also by wooden constructions of timbered ceilings. Hofafloor boards can be used also by redevelopments and reconstructions.

Hofafloor boards are ecological solution of sound impact insulation.



Old house sanation with hofafloor.



HOFATEX®

H O F A T E X
Cesta k Smrečine 5
975 45 Banská Bystrica
S L O V A K I A
www.hofatex.eu

isolare con il legno

l'isolation par le bois

insulate with wood

dämmen mit Holz

izolujite drevom

Hofafloor

Produced according to EN 13171, EN 622
Usage according to DIN 4108-4

Applicable in:

- New buildings
- Reconstructions
- Redevelopments

Sound impact insulation under:

- Wet screedings
- Dry screedings
- Bottom plates
- Parquetry
- Guss asphalt

In constructions of massive and wooden timber ceilings.

Technically reliable, nature product with easy and long term aproved laying experiences.

Rational processing with a proven track record

Quality control:

- LGA Nürnberg
- CSI Praha - Zlín

Renewable raw material, ecologic building material

Construction - ecological impact:

- Institut für Baubiologie und Ökologie, Neubeuern

Your dealer:



Hofafloor

APPLICATION

Cement screeding

By application of Hofafloor boards under cement screeding, which is commonly the most used solution, are the boards often laid in two layers with covering of joints. The result of double layer laying is the decreasing of dynamic stiffness to half-value, which improve the sound impact insulation characteristics of the boards.

Guss asphalt

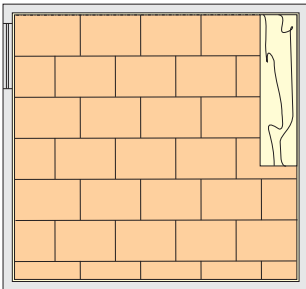
The fact, that Hofafloor boards are produced without glues and blast, enables the application of hot guss asphalt on the boards. In this case is the threat of melting or sintering eliminated.

Dry subfloor

Hofafloor boards are applicable under basic boards of different producers e.g. Fermacell, this is confirmed by internal construction tests and supported from satisfied customers. The excellent sound impact insulation values are also achieved by this kind of application.

Wood-based panels

Because of excellent values of dynamic stiffness and compression strength are the Hofafloor boards favourable for application under wood-based panels. The Hofafloor boards are proof againts high dynamic compression loadings from walkway layer.



Hofafloor boards are laid as floating in most of the constructions. In order to optimize the cut - offs, starts each row with the cut - off from the previous one. By each application, pay attention to maintaining the distance between the edge of the board and neighboring walls (min. 10 mm).

Cutting could be performed by a carpet knife or circular saw.

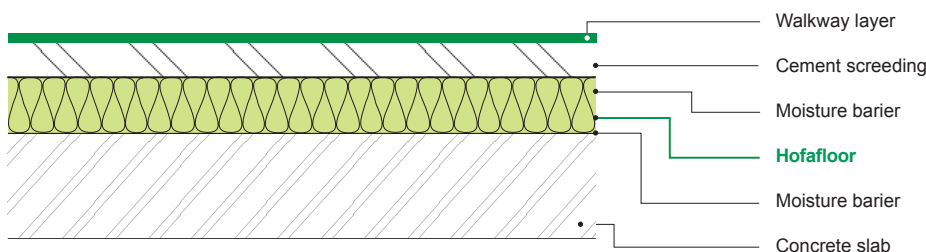
Flowing screeding

The Hofafloor boards is necessary to protect againts direct infiltration of moisture by creation of flowing screedings. With this construction is possible to save the application of additional plane bearing layer, e. g. gypsum board.

Parquetry

Because of low squeezability is possible to applicate the Hofafloor boards directly under parquetry. The parquet floor must transmit the loadings from floor surface. Therefore is necessary to provide basic layers with thickness, min. 20 mm.

Hofafloor under cement screeding



Information as of July 2009 - Technical data and details are subject to change



Hofafloor

Technical data

Produced according to EN 13171, EN 622
Usage according to DIN 4108-4

Product sign
WF- EN 13171- T6-SD30-CP2

Thermal conductivity - declared
 $\lambda_D = 0,040 \text{ W/m.K}$

Vapour diffusion factor
 $\mu = 5$

Dynamic stiffness
 $\leq 30 \text{ MN/m}^3$

Squeezability
by floor load $\leq 5 \text{ kPa} \leq 2 \text{ mm}$

Fire reaction class according to EN13501-1
E

Building material class according to DIN 4102
B2

Density
 160 kg/m^3

Format in mm
600 x 1200

Thickness in mm
21 / 20

Edges
smooth

Heat resistance
for short time up to $250 \text{ }^\circ\text{C}$

Wood-fiber insulation must be stored horizontally, kept dry and protected from mechanical damage.

isolare con il legno
l'isolation par le bois
insulate with wood
dämmen mit Holz
izolujte drevom

 **HOFATEX**[®]
insulate with wood